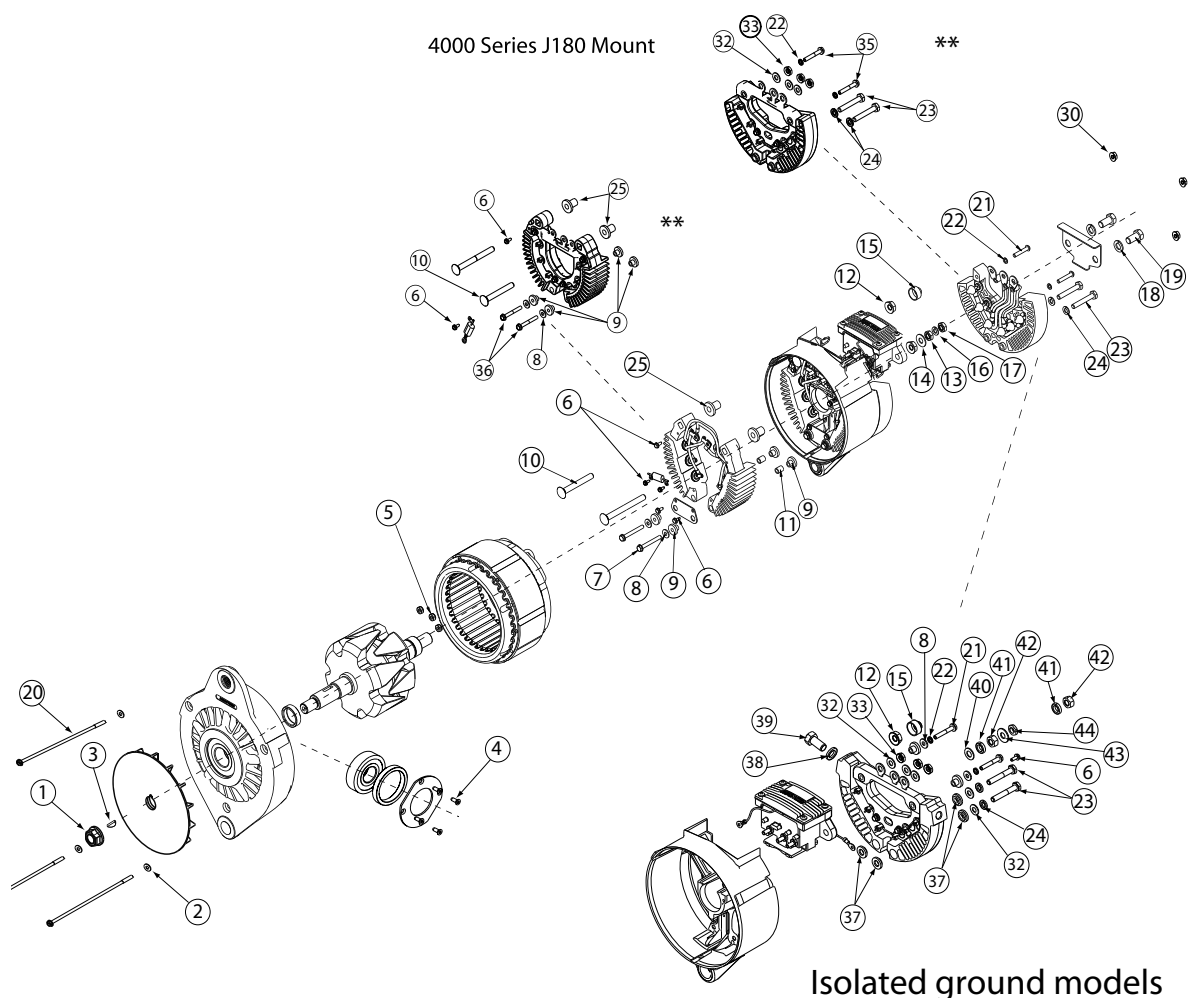


Source: Leece-Neville Heavy Duty Systems Division - Arcade, NY USA
Date: July 7, 2017
Bulletin No: TSB-3006
Models: 4800 Series J-180 Mount Alternators
Subject: Hardware Kit for 4000 Series J-180 Mount Alternators K2121047845

NOTE: All of these components are part of the hardware kit and not available for individual purchase.



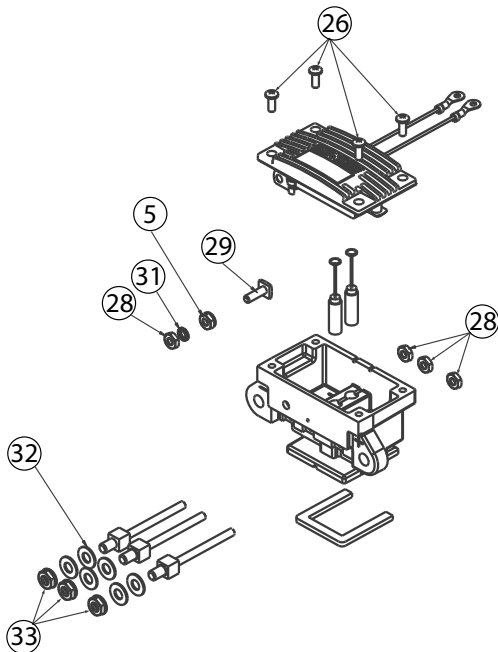
** Rectifier rings available on current production models and service parts.

Important: The information contained in this bulletin is intended for use by trained, professional technicians who have the proper tools, equipment, and training to perform the required maintenance described above. This information is NOT intended for 'do-it-yourselfers'; and you should not assume that this information applies to your equipment. If you have any questions regarding this information please visit our website at www.prestolite.com, or contact our technical service department at:

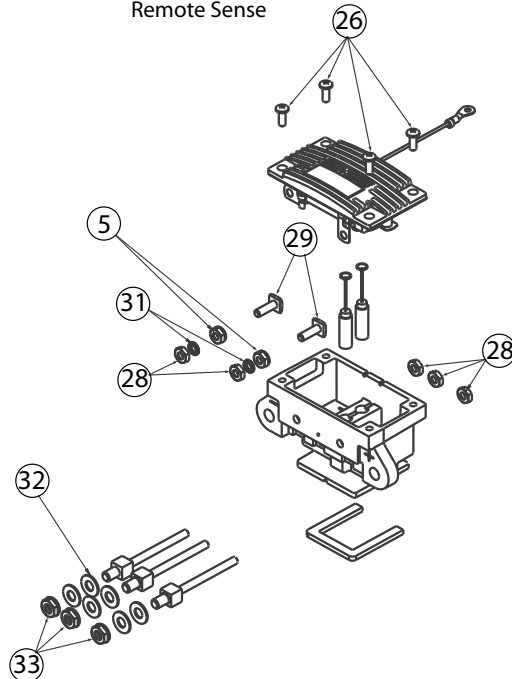
Date: July 7, 2017

Bulletin No: TSB-3006

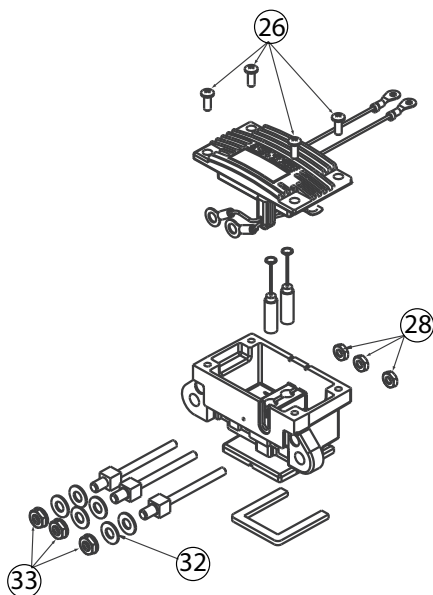
Ignition Excite



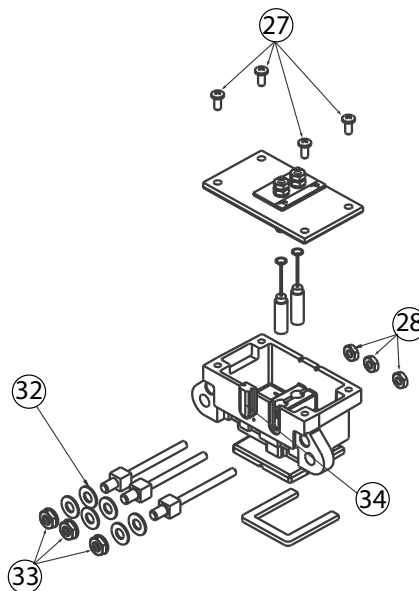
Ignition Excite
Remote Sense



Self Excite



Remote Regulated



Important: The information contained in this bulletin is intended for use by trained, professional technicians who have the proper tools, equipment, and training to perform the required maintenance described above. This information is NOT intended for 'do-it-yourselfers', and you should not assume that this information applies to your equipment. If you have any questions regarding this information please visit our website at www.prestolite.com, or contact our technical service department at:

Date: July 7, 2017

Bulletin No: TSB-3006

Description	Qty.	Key	Where used
NUT, 5/8-18, LOCK	1	1	Fan Nut
WASHER, FLAT#10	3	2	Thru-Bolt flat washer
KEY, WOODRUFF #8	1	3	Shaft key
SCREW, THREAD FORMING	4	4	Front housing retainer plate holding screw
NUT	5	5	Internal stator nuts to AC-taps
SCR TPG 6-32x11/32phw	5	6	Internal Positive Rectifier connector plate screw
#10 HEX/WSHR. Hd. Scr.	2	7	Hex screw for internal Rect. Jumper plate
WASHER FLT.203-.500-.0	4	8	Flat washer on internal rectifier connector plate screws
BUSHING , INS.	4	9	Insulates rectifier ring from rear housing
BOLT 5/16 x 2-1/2"	1	10	Positive post bolt, short side with clear cap, no connect
BUSHING, INSULATION	2	11	Cardboard insulator for internal bolt insulation
NUT, TENZ -5/16-18	2	12	Con. Nut for positive post
NUT,HEX 5/16-18	1	13	External positive post nut, lower
WASHER 5/16"	1	14	External positive post flat washer
STUD COVER	1	15	Used to cover positive post bolt externally that is not used.
WASHER LCK	2	16	External positive post lockwasher
NUT	1	17	External positive post nut, top
LOCKWASHER 3/8"	2	18	Lockwasher used on negative bolts externally
BOLT - 5/16" x 3/4"	2	19	External negative Bolts, holds negative plate
BOLT- 3/8" x 3/4"	2	19	External negative Bolts, holds negative plate
THRU.BOLT #10-32	3	20	Thru-Bolts holds Alternator together
SCREW	2	21	External negative rectifier flat head screws
LOCKWASHER #10	2	22	Used on screws in negative external rectifier
SCREW	2	23	External negative rectifier hold down bolts
LOCKWASHER 1/4"	2	24	Lockwasher on external negative rectifier bolts/ Hold down bolts
BUSHING , INS.	2	25	White internal post insulator
SCREW	4	26	Regulator screws for internal regulator
SCREW	4	27	Regulator screws for regulator plate with external regulator
NUT,STEEL #10-32	5	28	Used on brush box internal nut stator is attached above nuts
SCREW	2	29	Square headed screw used on brush box
NUT, #10-32 FLANGE LOCK	3	30	Thru-Bolt Nut
LOCKWASHER #10	2	31	Used on brush box, IGN term. SYNC term.
WSHR FLT .266-.562-	8	32	Flat washer for brush box AC-Taps
NUT	3	33	Ac Tap Con Nuts
GROMMET - NO HOLE	1	34	Gromet on brush box
Screw #10-32 X 1 1/4"	2	35	Holds negative ring to housing
Screw #10-32 X 1 1/2 "	2	36	Holds positive ring to housing
M10 Lockwasher	1	38	Neg. bolt lockwasher
Screw, M10X20	1	39	Neg. bolt lockwasher
Washer, Flat 5/16	1	40	Pos. stud hardware
Washer, Lock 5/16	2	41	Pos. stud hardware
Nut, M8X1.25	2	42	Pos. stud hardware
Washer, Guard, 5/16	1	43	Pos. stud hardware
Nut, Hex, M8X1.25	1	44	Pos. stud hardware

Important: The information contained in this bulletin is intended for use by trained, professional technicians who have the proper tools, equipment, and training to perform the required maintenance described above. This information is NOT intended for 'do-it-yourselfers', and you should not assume that this information applies to your equipment. If you have any questions regarding this information please visit our website at www.prestolite.com, or contact our technical service department at: